

FOR LEASE
Central Downtown
Location

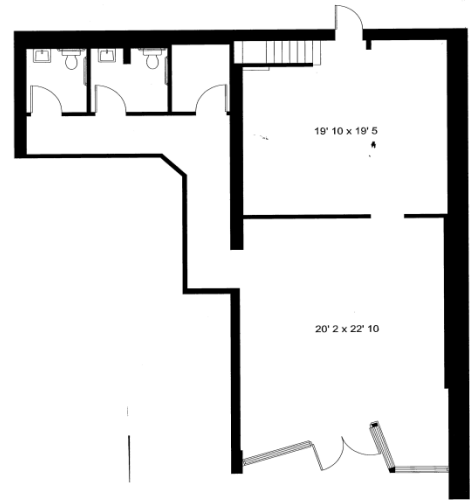
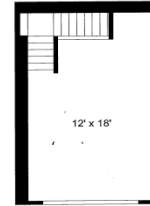
17 N. STONE AVE.



17 N. Stone Avenue
Tucson, AZ 85701



MAIN LEVEL 1396 SF
UPPER LEVEL 261 SF
RENTABLE AREA 1657 SF



STONE & CONGRESS:

GREAT OPPORTUNITY FOR RESTAURANT, COFFEE,
DONUT SHOP OR BAKERY. NEWLY REMODELED, &
LOCATED IN THE HEART OF DOWNTOWN TUCSON.
SMALL OUTDOOR SEATING AREA.

\$23 SQ. /FT. NNN

CONTACT: ERIK CHAPMAN
SWAIN R. CHAPMAN, CCIM, CRE

Chapman Management Group, LLC
33 W. Congress, Suite 205
Tucson, AZ 85701
520-622-5544 Office
520-628-1082 Fax
www.chapmanmanagementgroup.com



No warranty or representation, express or implied, is made as to the accuracy of the information contained herein, and same is submitted subject to errors, omissions, change of price, rental or other conditions, withdrawal without notice, and to any specific listing conditions, imposed by our principals.